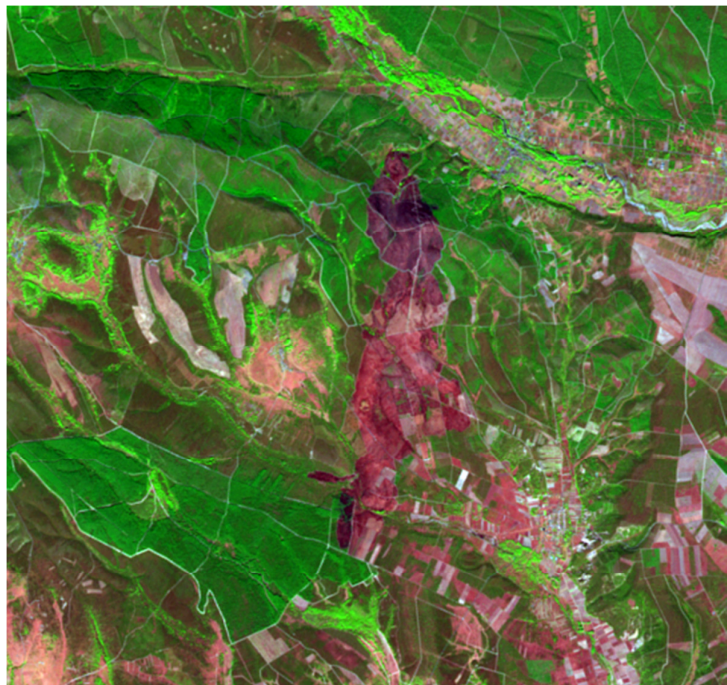




# Advances in Remote Sensing and GIS applications in Forest Fire Management *From local to global assessments*

Jesus San-Miguel Ayanz, Ioannis Gitas, Andrea Camia, Sandra Oliveira  
Editors



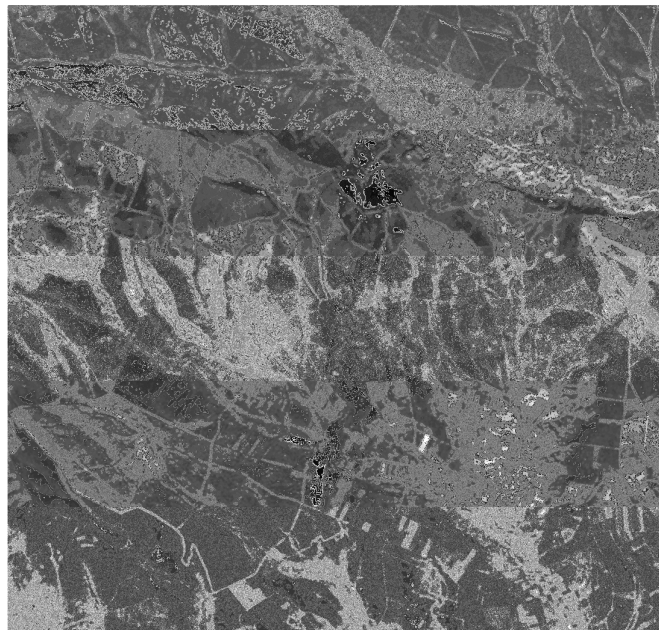
EUR 24941 EN - 2011



Proceedings of the 8<sup>th</sup> International EARSeL FF-SIG Workshop  
Stresa (Italy), 20 - 21 October 2011

## Advances in Remote Sensing and GIS applications in Forest Fire Management

*From local to global assessments*



**Edited by:**

**Jesus San-Miguel Ayanz**

**Andrea Camia**

**Sandra Santos de Oliveira**

*Institute for Environment and Sustainability*

*Joint Research Centre (Italy)*

**Ioannis Gitas**

*Laboratory of Forest Management and Remote Sensing*

*Aristotle University of Thessaloniki (Greece)*

The mission of the JRC-IES is to provide scientific-technical support to the European Union's policies for the protection and sustainable development of the European and global environment.

European Commission  
Joint Research Centre  
Institute for Environment and Sustainability

**Contact information**

Address: TP261, Via Fermi, 2749 – 21027 – Ispra (VA) - Italy

jesus.san-miguel@jrc.ec.europa.eu

Tel.: +39 0332 786138

Fax: +39 0332 785500

<http://forest.jrc.ec.europa.eu/earsel>

**Legal Notice**

Neither the European Commission nor any person acting on behalf of the Commission is responsible for the use which might be made of this publication.

***Europe Direct is a service to help you find answers  
to your questions about the European Union***

**Freephone number (\*):**

**00 800 6 7 8 9 10 11**

(\* Certain mobile telephone operators do not allow access to 00 800 numbers or these calls may be billed.

A great deal of additional information on the European Union is available on the Internet. It can be accessed through the Europa server <http://europa.eu/>

JRC 66634

EUR 24941 EN

ISBN 978-92-79-21256-7 (print)

ISBN 978-92-79-21257-4 (pdf)

ISSN 1018-5593 (print)

ISSN 1831-9424 (online)

doi: 10.2788/67097

Luxembourg: Publications Office of the European Union

© European Union 2011

Reproduction is authorised provided the source is acknowledged

*Printed in Italy*

## SCIENTIFIC COMMITTEE

- Vincent Ambrosia - *NASA Ames Research Center (USA)*
- Pietro Alessandro Brivio - *Consiglio Nazionale delle Ricerche (Italy)*
- Andrea Camia - *Joint Research Centre (Italy)*
- Emilio Chuvieco - *University of Alcalá (Spain)*
- Juan de la Riva - *University of Zaragoza (Spain)*
- Angela De Santis - *INSA, Ingeniería y Servicios Aeroespaciales (Spain)*
- Mike Flannigan - *Canadian Forest Service (Canada)*
- Ioannis Gitas - *Aristotle University of Thessaloniki (Greece)*
- Nikolaos Koutsias - *University of Ioannina (Greece)*
- Rosa Lasaponara - *CNR-IMAA (Italy)*
- Pilar Martin - *Consejo Superior de Investigaciones Científicas (Spain)*
- George Mitri - *University of Balamand (Lebanon)*
- José Miguel Pereira - *Instituto Superior de Agronomia (Portugal)*
- David Riaño - *Consejo Superior de Investigaciones Científicas (Spain)*
- Dar Roberts - *University of California - Santa Barbara (USA)*
- Jesus San-Miguel Ayanz - *Joint Research Centre (Italy)*
- Kevin Tansey - *University of Leicester (UK)*
- Sander Veraverbeke - *Jet Propulsion Laboratory, California Inst. Technology (USA)*
- Jan van Wagtenonk - *US Geological Survey (USA)*
- Martin Wooster - *University of London (UK)*

## ORGANIZING COMMITTEE

- Jesus San-Miguel Ayanz - *Joint Research Centre (Italy)*
- Andrea Camia - *Joint Research Centre (Italy)*
- Ioannis Gitas - *Aristotle University of Thessaloniki (Greece)*
- Sandra Santos de Oliveira – *Joint Research Centre (Italy)*
- EARSeL secretariat



## Table of Contents

PREFACE.....	11
I - LOCAL TO REGIONAL APPLICATIONS OF REMOTE SENSING IN PRE AND DURING FIRE CONDITIONS.....	13
Estimation of Fuel Moisture Content for fire danger assessment: turning potential into reality? .....	15
<i>Marta Yebra</i>	
NASA's Airborne Autonomous Modular Scanner (AMS) – Wildfire Sensor: Instrumentation Supporting Fire Intensity, Radiant Energy Measurements, and Disaster Management.....	17
<i>V. G. Ambrosia, J. S. Myers, E. A. Hildum, C. Ichoku, W. Schroeder, B. Lobitz</i>	
Development of a Fire-Induced Flashover Probability Index (FIFPI) for Eskom Transmission Lines .....	23
<i>P. Frost, H. Vosloo, J. Meeuwis</i>	
Integration of image processing methods for fuel mapping.....	31
<i>E. Maillé, L. Borgniet, C. Lampin-Maillet, M. Jappiot, C. Bouillon, M. Long-Fournel, D. Morge, M. A. El Gacemi, D. Sorin</i>	
Fuel type mapping in the Mediterranean region of North Lebanon using Object-Based Image Analysis of ASTER imagery .....	39
<i>G. H. Mitri, M. Nader, L. Salloum</i>	
Mapping canopy fuel load in Aleppo pine ( <i>Pinus halepensis</i> Mill.) forests in Greece using high spatial resolution satellite imagery .....	45
<i>I. D. Mitsopoulos, G. Mallinis, P. Stournara, A. P. Dimitrakopoulos, I. Z. Gitas, P. Patias</i>	
Towards a dynamic burning efficiency factor .....	47
<i>P. Oliva, E. Chuvieco</i>	
Determination of the Forest Fire Potential by Using Remote Sensing and Geographical Information System, Case Study-Bodrum/Turkey .....	51
<i>E. Özelkan, C. Örmeci, M. Karaman</i>	
Burning probability assessment for north-western Spain.....	57
<i>M. L. Pettinari, M. Finney, E. Chuvieco</i>	
Field estimation of ash and char colour-lightness using a standard grey scale .....	63
<i>D. P. Roy, L. Boschetti, S. W. Maier, A. M. S. Smith</i>	
Forest fire risk maps in a GIS Open Source environment for Norwest of Portugal.....	65
<i>A.C. Teodoro, L. Duarte</i>	
II - LOCAL TO REGIONAL APPLICATIONS OF REMOTE SENSING IN POST-FIRE ASSESSMENT .....	71
Assessing Fire Severity in the Tropical Savanna of Northern Australia.....	73
<i>Stefan W. Maier</i>	
Landscape, fire distribution and vegetation recovery in Portugal: 2003 and 2005 fire seasons.....	75
<i>A. Bastos, C. Gouveia, C. DaCamara, R. Trigo</i>	
Assessment of affected areas by forest fires in Mexico.....	81
<i>M.I. Cruz-Lopez, G. Lopez-Saldaña</i>	
A performance evaluation of Support Vector Machines and the Nearest Neighbor classifier in classifying image objects for burned area mapping .....	87
<i>E. Dragozi, I. Z. Gitas, D.G. Stavrakoudis, J.B. Theocharis</i>	
Post-fire vegetation response as a proxy to quantify the magnitude of burn severity in tropical peat swamp forest, Central Kalimantan, Indonesia .....	93
<i>A. Hoscilo, K. Tansey, S.E. Page</i>	

ReSAC Forest cover monitoring and forest damage assessment in the frame of GMES projects – case study from Bulgaria .....	99
<i>I. Ivanov, R. Chausheva, V. Vassilev</i>	
Trend analysis of time series image data for burned area mapping and post-fire monitoring.....	105
<i>T. Katagis, I. Z. Gitas, P. Toukiloglou</i>	
Fire Radiative Energy and Biomass Burned Estimation Under Sparse Satellite Sampling Conditions: Using Power Law Probability Distribution Properties of MODIS Fire Radiative Power Retrievals.....	111
<i>S. Kumar, D. P. Roy, L. Boschetti</i>	
Evaluating post fire vegetation recovery using satellite MODIS data .....	113
<i>R. Lasaponara, T. Montesano, F. Desantis, A. Lanorte</i>	
Estimating burn area severity using spatial autocorrelation analysis.....	119
<i>R. Lasaponara, A. Lanorte, G. Nolè, B. Murgante</i>	
Contribution of remote sensing approaches to assess post-fire damage in wildland urban interfaces .....	125
<i>M. Long-Fournel, A. Tribotte, C. Lampin, M. Jappiot, D. Morge</i>	
An integrated index for the multitemporal validation of Burned Area products.....	133
<i>M. Padilla, S. Hantson, R. Cardozo, D. Corti, E. Chuvieco</i>	
Delineating unburned islands within fire scar perimeter. The role of spectral and spatial resolution of satellite data .....	139
<i>M. Pleniou, P. Dimopoulos, N. Koutsias</i>	
Monitoring post-fire vegetation recovery using optical and SAR data .....	145
<i>A. I. Polychronaki, I. Z. Gitas, A. Minchella</i>	
Identification of burned areas in the Liguria region using Landsat and QuickBird images. The case study of Monte Fasce.....	151
<i>M. Sirtori, G. Barberis, P. Gamba, M. Mariotti</i>	
Effects of environmental properties, burning conditions and human-related variables on fire severity derived from Landsat TM images for a large fire in central Spain .....	157
<i>O. Viedma, L. A. Arroyo, R. Mateo, A. De Santis, J.M. Moreno</i>	
III - NATIONAL TO GLOBAL APPLICATIONS OF REMOTE SENSING IN PRE AND DURING FIRE CONDITIONS.....	163
Integrating geospatial information into global fire risk assessment .....	165
<i>Emilio Chuvieco</i>	
Complementarity of remote sensing indicators of wildfire danger with vegetation combustibility mapping .....	167
<i>V. Cheret, J-P. Denux, R. Savazzi, C. Piedallu, A. Jacquin, V. Drolon</i>	
Integrating geospatial information into fire risk assessment.....	173
<i>E. Chuvieco, I. Aguado, S. Jurdao, M.L. Pettinari, J. Salas, J. de la Riva, P. Ibarra, M. Rodríguez, M. Echeverría, D. Azqueta, M.V. Román, A. Bastarrika, S. Martínez, C. Recondo, E. Zapico, F. J. Martínez-Vega, S. Martín</i>	
A high-resolution analysis of fuel spatial structure and fire spread in Spain .....	179
<i>Sergi Costafreda-Aumedes, Cristina Vega-Garcia</i>	
Evaluating present and future fire risk in Greece .....	181
<i>C. Giannakopoulos, A. Karali, A. Roussos, M. Hatzaki, G. Xanthopoulos, K. Kaoukis</i>	
A new methodology for near-real time estimation of smoke plume emissions from forest fires in the European Forest Fire Information System .....	187
<i>B. Guillaume, C. Liousse, J. San-Miguel Ayanz, A. Camia</i>	
Fire occurrence zones from local to global scale in the Mediterranean Basin: implications for multi-scale fire management and policy .....	197
<i>N. Koutsias, B. Allgower, K. Kalabokidis, G. Mallinis, P. Balatsos, J. G. Goldammer</i>	



Modelling fire occurrence factors in Spain. National trends and local variations.....	203
<i>J. Martínez-Fernández, N. Koutsias</i>	
The role of Remote Sensing in the implementation of Lebanon’s National Strategy for forest fire management.....	209
<i>G. H. Mitri, I. Z. Gitas</i>	
An insight into the underlying causes of temporal/spatial trends of fires and burned areas in the European Mediterranean countries.....	215
<i>M. Rodrigues, J. San-Miguel Ayanz, S. Oliveira, F. Moreira, A. Camia</i>	
Level of agreement on forest fire statistics from national sources and remote sensing in EFFIS.....	221
<i>L. Vilar, J. San-Miguel Ayanz, A. Camia</i>	
IV - NATIONAL TO GLOBAL APPLICATIONS OF REMOTE SENSING IN POST-FIRE ASSESSMENT.....	227
MODIS-Landsat data fusion for continental scale 30m resolution burned area mapping.....	229
<i>L. Boschetti, D. Roy</i>	
Comparative evaluation of restoration practices applied to Mediterranean forest ecosystems using remote sensing and GIS: natural regeneration versus reforestation.....	231
<i>P. Christakopoulos, D. Paronis, M. Scarvelis, K. Kalabokides, I. Hatzopoulos</i>	
Global burned area mapping from European satellites: the ESA fire_cci project.....	237
<i>E. Chuvieco, Christopher Sandow, K. P. Guenther, F. González-Alonso, J.M. Pereira, O. Pérez, K. A. Bradley, M. Schultz, F. Mouillot, P. Ciais</i>	
A comprehensive and operational approach to forest fire management.....	241
<i>A. De Santis, R. Fabrizi</i>	
Assessing the agreement between MODIS and SEVIRI maps of the fire season - a case study in the Central African Republic.....	247
<i>P. H. Freeborn, M. J. Wooster</i>	
National scale mapping of burnt areas as a tool for the effective development of wildfire management strategy. Application on the two devastating fire seasons of 2007 and 2009 in Greece.....	253
<i>C. Kontoes, I. Keramitsoglou, I. Papoutsis, N. Sifakis, P. Xofis</i>	
Assessment of fire selectivity in relation to land cover at broad scale. A comparison between European countries.....	259
<i>S. Oliveira, R. Boca, J. San-Miguel Ayanz, F. Moreira</i>	
Land use change and Post-Fire in Southern Europe.....	265
<i>C.J.Kemper Pacheco, B.Duguay, D.Liberati</i>	
Monitoring ten years of fire activity in West and Central Africa.....	269
<i>I. Palumbo, M. Clerici, J-F. Pekel, J-M. Gregoire</i>	
Operational use of remote sensing on forest fires in Europe: Real-time processing and post disaster information management.....	275
<i>E. Stein, E-M. Bernhard, C. Strobl, G. Strunz</i>	
Positive and negative evidence of burn from spectral indices for burned area mapping in Mediterranean regions.....	281
<i>D. Stroppiana, G. Bordogna, M. Boschetti, P. Carrara, L. Boschetti, P.A. Brivio</i>	